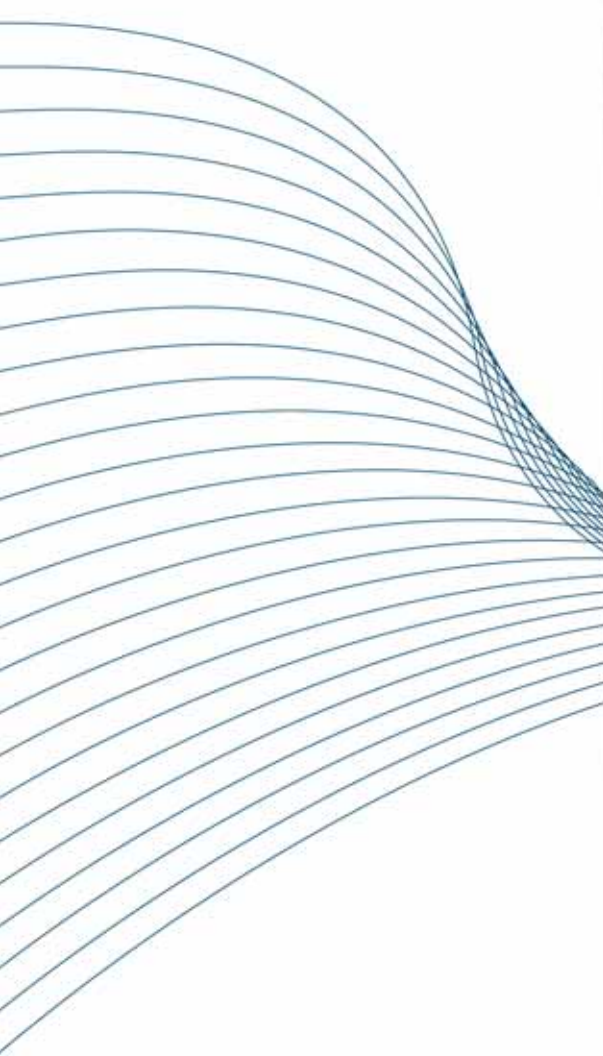


Rascheltronic®



RSJ 5/1 EL



RSJ 5/1 EL

High-performance Jacquard-Raschel machine
for the production of elastic and rigid fabrics

生产弹性或非弹性织物的高性能贾卡拉舍尔机器



KARL MAYER

RSJ 5/1 EL

High-performance Jacquard-Raschel machine for the production of elastic and rigid fabrics

生产弹性或非弹性织物的高性能贾卡拉舍尔机器

All these advantages are offered by the new *Rascheltronic*® RSJ 5/1 EL which was designed for the production of a great variety of Raschel fabrics. Being equipped with a Piezo-Jacquard system and an electronic guide bar control system (EL), this machine can manufacture patterned corsetry, elastic and rigid lingerie, tulle constructions, sportswear as well as articles with integrated functional zones. In connection with the new EL system, this high-performance Jacquard Raschel machine offers the producer of functional articles an extraordinary wide range of new applications. At the same time it allows the user to determine exactly defined areas, which can be created by means of a shog distance of max.170 needles in the ground guide bars GB 5 and GB 6.

新型拉舍尔簇尼克®机器RSJ5/1EL拥有众多优势，适合生产多种拉舍尔织物。该机配备了匹艾州贾卡系统和EL电子横移系统，可以生产塑身衣面料、弹性和非弹性的内衣面料、超薄面料、运动服面料、以及带有功能性区域的面料。装配新的EL系统后，这种高性能贾卡拉舍尔机器使得功能性服装生产商拥有了更广泛的产品种类。同时，由于地梳GB 5和GB 6最多可以横移170针，设计人员可以精确定位花型区域。



The sequential yarn feeding to all the warp beam positions ensures the manufacture of different stitch densities, by means of which it is possible to obtain varying elongation values of the product. Besides, the new EL system enables a quick lapping change, so that smaller order quantities can be produced, and the development time for innovative articles can be reduced. Working with this machine is made easy by two further features: the electronic fabric take-up and batching device. The modern operator interface with Touchscreen ensures easy access to all important machine data and considerably facilitates machine operation. The machine control computer equipped with Ethernet interface ensures the networking of different machines with one another as well as with a control station. All the operating elements are easy to survey and ergonomically arranged. High-tech manufacturing plants along with permanent quality control guarantee highest precision and a long service life of all machine components.

多速送经系统使得机器可以生产拥有不同密度区域的织物，从而赋予织物不同的延伸性。此外，新的EL系统可以快速改变垫纱方式，因此可以生产小的订单，同时也缩短了新产品的开发时间。电子牵拉装置和电子卷取装置的应用，使得机器操作变得极其简单。先进的触摸屏控制界面（操作界面）控制简单，确保操作者便捷地获得所有重要机器数据。控制机器的计算机装配有以太网，确保机器与机器，机器与控制站之间的联网。所有工作部件安装清晰化、人性化。高科技生产工厂和稳定的质量控制保证了所有机器部件的高精度与耐持久。

这种拉舍尔簇尼克®具有很高的技术标准，拥有宽泛的花型生产能力，生产效率和完善的技术。

This *Rascheltronic*® has a very high technological level, showing utmost versatility, productivity and technical perfection.

RSJ 5/1 EL

High-performance Jacquard-Raschel machine for the production of elastic and rigid fabrics

生产弹性或非弹性织物的高性能贾卡拉舍尔机器

new and exceptional patterning possibilities

fast lapping change

easy pattern change

wide range of patterns and high flexibility

high production output

easy handling

top quality

extreme reliability and low maintenance

short set-up times

宽泛的花型生产能力

快速的垫纱变换

便捷的花型转换

宽泛的花型生产能力和高度的灵活性

较高的生产效率

操控简单

优异的品质

操作稳定和维护

简短的设置时间

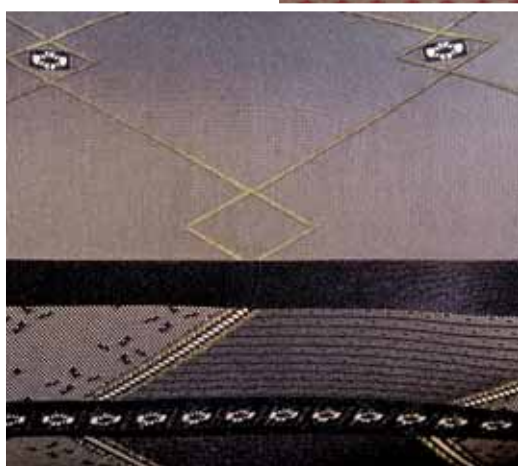
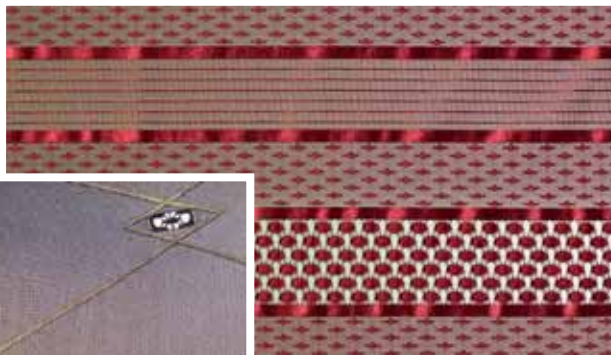


Rascheltronic®

RSJ 5/1 EL

Application

应用



RSJ 5/1 EL

Technical data

技术参数

KARL MAYER Service Plus

Service package

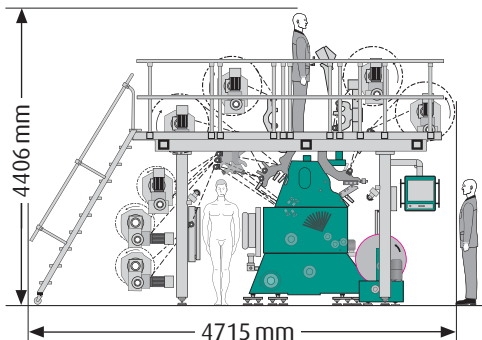
Teleservice for increased availability and productivity of KARL MAYER machines equipped with **KAMCOS**®

卡尔迈耶服务网络

服务包

提升卡尔迈耶机器(装配有**KAMCOS**®)效用和生产力的网络远程服务

Total width	Total depth	Total height
总宽度	总长度	总高度
7520 mm	4715 mm	4406 mm



Rights for technical modifications reserved
保留技术修正权

RSJ 5/1 EL Rascheltronic

Working width

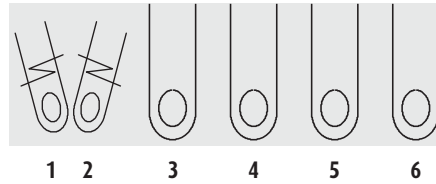
3300 mm = 130 inches

Gauge

E28

Bars/knitting elements

Individual needle bar, tongue bar, Jacquard bar in split execution (JB 1 and JB 2), 4 ground guide bars (GB 3 to 6), knockover comb bar and stitch comb bar.



Warp beam support

standard: 5 x 32" free-standing, 5 warp beam positions of 812 mm (32 inches)

optional: 6 x 32" free-standing, 6 warp beam positions of 812 mm (32 inches) or 7 warp beam positions, free-standing 4 x 812 mm (32 inches), 3 x 533 mm (21 inches)

KAMCOS® (KARL MAYER COMMAND SYSTEM)
Motion Control/Multi Speed for the control of the basic functions. Pattern Control for the control of the ground guide bars, pattern guide bars and Jacquard bar. USB port used for USB memory stick for reading and writing pattern data. Optional 3 1/2" USB disk drive. Operator interface with Color Touchscreen for production data display, network interface (Ethernet) for data collection, Teleservice, and integrated yarn inspection - Laserstop

Yarn let-off device „Multi Speed“

7 electronically controlled yarn let-off drives for sequential yarn feeding to JB, GB 3 to GB 6, driven by geared motor, controlled via Motion Control

Pattern drive EL

Electronic guide bar control on Jacquard bars (JB 1 and JB 2) and ground guide bars (GB 3 to GB 6)

Fabric take-up

Electronically controlled fabric take-up, consisting of 4 rollers vulcanized and ground, driven by geared motor, controlled via Motion Control

Batching device

Batching device No. 34F, standing separately, with friction drive, max. batch diameter of 685 mm (27 inches), controlled via Motion Control

Electrical equipment

Speed-regulated drive, total connected load of the machine: 20 kVA

Operating conditions for piezoelectric elements

Relative air humidity: max 65 %

Performance (speed)

max. 1100 rpm depending on lapping and on the yarn type to be worked

RSJ 5/1 EL 拉舍尔簇尼克

工作幅宽

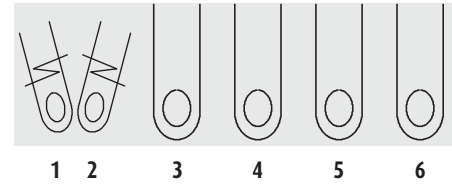
3300 mm = 130 英寸

机号

E28

梳栉/成圈机件

独立的针床, 针芯床, 分离的贾卡梳 (JB 1和JB 2), 4把地梳 (GB 3到GB 6), 脱圈板床, 沉降片床。



经轴支撑架

标准: 5 x 32" 独立安装, 5个经轴位置, 812 mm (32英寸)。

可选: 6 x 32" 独立安装, 6个或7个经轴位置, 812 mm (32英寸), 独立安装4 x 812 mm (32英寸), 3 x 533 mm (21英寸)

KAMCOS® (KARL MAYER COMMAND SYSTEM)
卡尔迈耶控制系统

多速运动控制系统可以实现机器的基本功能。花型控制系统控制地梳、花梳和贾卡梳的横移。通过支持U盘的USB插口可读取和写入花型数据, 也可以选用3.5英寸软盘。彩色触摸屏操作界面可以显示生产数据, 网络接口(以太网)可用于数据采集和网络远程服务, 光电自停装置可以对纱线进行检测。

送经装置“多速送经”

JB, GB 3到GB 6采用7套电子送经系统, 多速送经, 由运动控制系统控制。

EL横移装置

电子横移装置控制贾卡梳 (JB 1和JB 2) 和地梳 (GB 3到GB 6)。

织物牵拉装置

电子控制的织物牵拉装置, 由四个包覆黑色包布的罗拉组成, 通过马达传动, 由运动控制系统控制。

卷取装置

采用34F卷取装置, 独立配置, 摩擦传动, 由运动控制系统控制, 最大卷取直径685 mm (27英寸)

电子设备

调速传动, 机器总连接负荷: 20 kVA

匹艾州贾卡元件的工作环境要求

相对空气湿度为 65 %

性能 (速度)

最高速度1100转/分, 受织物结构和纱线种类的影响。

Germany

KARL MAYER Textilmaschinenfabrik GmbH
Brühlstraße 25
63179 Obertshausen
Phone +49 6104 4020
Fax +49 6104 402600
E-mail: info@karlmayer.de

KARL MAYER MALIMO
Textilmaschinenfabrik GmbH
Mauersbergerstraße 2, 09117 Chemnitz
PF 713, 09007 Chemnitz
Phone +49 371 81430
Fax +49 371 8143110
E-mail: info@karlmayer.de

Sucker Textilmaschinen GmbH
Rudolfstraße 10
41068 Mönchengladbach
Phone +49 2161 654661
Fax +49 2161 654669
E-mail: info@karlmayer-sucker.de

Switzerland

KARL MAYER Textilmaschinen AG
Fabrikstrasse
CH-9240 Uzwil
Phone +41 71 9558400
Fax +41 71 9558487
E-mail: info@karlmayer.ch

Japan

NIPPON MAYER LTD.
No. 27-33 1-chome, Kamikitano
Fukui-City, 918-8522
Phone +81 776 545500
Fax +81 776 273400
E-mail: info@nipponmayer.co.jp

P. R. China

KARL MAYER (China) LTD.
518 # South Changwu Road
Wujin District, Changzhou City
Jiangsu Province, Zip code: 213166
Phone +86 519 86198888
Fax +86 519 86190000
E-mail: info@karlmayer.com.cn

KARL MAYER (H.K.) LTD.
Suite 1413, 14th Floor
Ocean Center, Harbour City
Tsim Sha Tsui, Kowloon
Phone +8 52 27239262
Fax +8 52 27398730
E-mail: info@karlmayer.com.hk

Italy

KARL MAYER ROTAL S.r.L.
Via Trento N° 117
38017 Mezzolombardo (TN)
Phone +39 0461 608611
Fax +39 0461 601790
E-mail: info@karlmayerrotal.it

UK

KARL MAYER Textile Machinery LTD.
Kings Road, Shepshed
Leic. LE 12 9HT
Phone +44 1509 502056
Fax +44 1509 508065
E-mail: info@karlmayer.co.uk

USA

KARL MAYER North America
Mayer Textile Machine Corp.
310 North Chimney Rock Road
Greensboro, North Carolina 27409
Phone +1336 294 1572
Fax +1336 8540251
E-mail: info@karlmayerusa.com

www.karlmayer.de



we care about your future



KARL MAYER