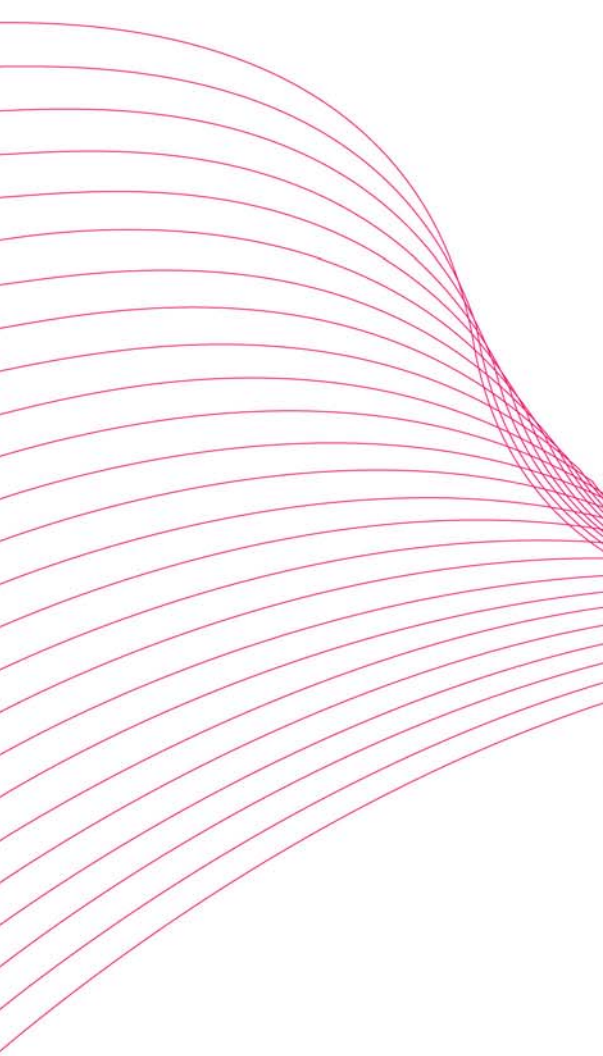




Elast-O-Matic



DSE-HH 21/30 DNC | DSE-HH 50/30 DNC



DSE-HH 21/30 DNC | DSE-HH 50/30 DNC

Elastane Warping Machine

氨纶整经机



KARL MAYER

TEXTILE SOLUTIONS. TEXTILE PERFECTION.

KARL MAYER'S textile machines.

卡尔迈耶纺织机器，是纺织解决方案，让纺织尽善尽美

Something which began 70 years ago in Obertshausen has now become part of our everyday lives. Textiles produced on KARL MAYER'S machines surround us in both our private and professional lives, providing comfort, security and safety.

The success story of KARL MAYER, the company set up by Mr. Karl Mayer in 1937, began 10 years later with the production of tricot machines. Nowadays, this family-run, German company leads the world in the warp knitting machine sector. For the section Warp Preparation for weaving and warp knitting, KARL MAYER offers innovative complete solutions for the weaving industry, especially with the brands KARL MAYER, BENNINGER, ROTAL, SUCKER and GRIFFIN.

The development of this textile world demands a global strategy: „Worldwide customer-oriented“ is one of KARL MAYER'S most important objectives.

A keen awareness of quality, expert engineering and innovative products are at the heart of KARL MAYER – and this is what makes our customers all over the world trust us completely.

Our joint success is based on this trust, together with the dialogue and close cooperation which we foster with our customers. This is why KARL MAYER supplies machines tailor-made to very specific requirements. This makes our clients more and more successful, and better equipped to face the future – and it makes us experts in the textile chain.

To meet this responsibility, we have extended our operations to other areas of textile production.

Our strategy of developing other commercial segments in the textile chain gives our customers the opportunity to grow with us and, at the same time, prepares us for future challenges.

The concepts of 'future' and 'responsibility' go hand in hand at KARL MAYER. The development of new technologies, are just as important here as furthering the careers of our employees and providing training for our clients since, as far as we are concerned, the best future lies with people and their ideas.

KARL MAYER – we care about your future.

70年前始于奥博茨豪森的事情现在已成为我们日常生活的一部分，卡尔迈耶机器生产的纺织品就在我们的周围，无论是我们的私人生活还是职业场所，它们让我们们的生活更加舒适、安全。

卡尔迈耶先生于1937年创办了卡尔迈耶公司，10年后生产特里科机器，成功故事由此展开。如今，这家德国家族企业引领着世界经编行业。在经纱准备领域，卡尔迈耶为机织行业提供完备的创新型解决方案，拥有KARL MAYER, BENNINGER, ROTAL, SUCKER以及GRIFFIN这些知名品牌。

纺织世界的发展需要全球化的战略，“以全世界的客户为导向”是卡尔迈耶最重要的目标。

对质量、专业技术和创新产品的敏锐洞察力是卡尔迈耶的核心，也正是这些使我们取得了世界各地客户的完全信任。

我们的共赢正是基于这种信任，以及与客户的联系和紧密合作。正是因为这些，卡尔迈耶能按照客户的特殊需求量身定做机器，使我们的客户获得越来越大的成功，并且面向未来配备了更好的装备——它使我们在纺织链上更为专业化。

为了担负起这样的责任，我们的业务范围已经延伸到纺织生产的其他领域。

发展纺织链上其他商业领域的策略让我们的客户有机会跟我们一起成长，同时，让我们准备迎接未来的挑战。

在卡尔迈耶，“未来”和“责任”的概念是连在一起的。新技术的研发与促进员工事业、以及向客户提供技术培训同等重要，我们坚信，人类和他们的思想会开创最美好的未来。

卡尔迈耶——我们关注您的未来！



DSE-HH 21/30 DNC | DSE-HH 50/30 DNC *Elast-O-Matic*

For working highly delicate elastane yarn with computer controlled beam build-up
用于非常精细的弹性纱并由计算机控制盘头整经

KARL MAYER elastane warping machines, leading products in the market, enjoy worldwide an excellent reputation. The vertical arrangement of the packages allows warping finest yarns under a gentle yarn treatment. The free yarn run guarantees an easy operation along with highest efficiency.

A computer control provides a continuous compensation of the differences among the yarn packages. The result is a warp beam featuring uniform yarn tensions throughout the yarns as well as identical warp-beam circumferences.

卡尔迈耶氨纶整经机，是市场的领先产品，在全世界享有极好的声誉，纱筒垂直排放可以在很小的张力下对极细的纱线进行整经，纱线自由运行保证了高效率下的简易操作性。

计算机控制为纱线提供连续的差异补偿，结果是盘头上所有的纱线张力均匀并且有着相同的盘头周长。同样，在机器从



Also in case of a machine stop from top speed to zero, our highly-intelligent brake synchronisation systems guarantee a reliable yarn sheet control.

Optoelectronic control by camera stops the machine in case of yarn breakage.

Thanks to their unique precision of the warp-beam build-up, the Karl Mayer warping units guarantee highest efficiency with the further processing on warp-knitting machines.

DNC control KAMCOS®

Operator Interface IPC/Touchscreen, Ethernet interface for networking and connection for the relevant data acquisition and Teleservice.

Network-OPC package

Hardware and software package for a problem-free link between machine and network, for the transfer of logs and of real-time data to an external computer as well as for the compilation of user's own log characteristics.

KARL MAYER Service Plus (Teleservice)

Service packages for increasing the availability and productivity of KARL MAYER machines:
KARL MAYER Teleservice.

最高速度停车到静止的情况下，我们高度智能化的同步刹车系统保证了对纱线片的可靠控制。

照相机光电控制在检测到断纱时停车。

由于盘头整经时独有的精确性，卡尔迈耶整经设备保证了经编机能以最高效率进行深加工。

DNC 控制 KAMCOS®

操作界面IPC，英寸的触摸屏，以太网接口，和相关的数据采集和远程服务连接。

网络—OPC 功能

此软硬件功能在机器和网络间为出现的问题自由连接，转移日志和实时数据到外部的计算机，以及编辑用户自己的日志特性。

卡尔迈耶增值服务（远程服务）

此服务功能增加了卡尔迈耶机器的实用性和生产力：
卡尔迈耶远程服务。

DSE-HH 21/30 DNC | DSE-HH 50/30 DNC *Elast-O-Matic*

For working highly delicate elastane yarn with computer controlled beam build-up

用于非常精细的弹性纱并由计算机控制盘头整经

DSE-HH Elast-O-Matic

Elastane warping machine with warping speed steplessly selectable from 30 to 800 m/min, final elongation may be set from 15-100 %.

Overrun roller

Positively driven for final elongation zone 3, especially for elongation under 40 %.

Pre-elongation unit

WA-E for optimal package draw-off, motordriven pre-elongation from 0-300 %.

Measuring and regulating system

for setting the required final elongation. Allowance in the accuracy of the system regardless of the warping speed, plus/minus 2 %, in starting and stopping stage plus/minus 10 %.

Computer functions

beam diameter detector, yarn tension measuring device, logging unit and preselection device. Monitor for the simultaneous display of all important data.

Circumference control

homogeneous beam build-up by computer control.

Yarn path with 3 elongation zones

- 1 - Pre-elongation 50-210 % between the creel and the pre-elongation unit.
- 2 - Between pre-elongation unit and positively driven overrun roller.
- 3 - Final elongation 15-100 % between overrun roller and the beam.

DSE-HH Elast-O-Matic

整经速度从30到800米/分，无极调速，最终牵伸率范围15-100 %。

测速罗拉

积极测速（最终牵伸区3），尤其在牵伸率40 %以下，特别适用。

预牵伸单元

WA-E 用于纱筒的最佳退绕，马达驱动预牵伸率从0-300 %。

测量和调节系统

用于设定需要的最终牵伸率。不管整经速度大小，系统精度误差为±2 %，开机和停机时的系统精度误差为±10 %。

计算机功能

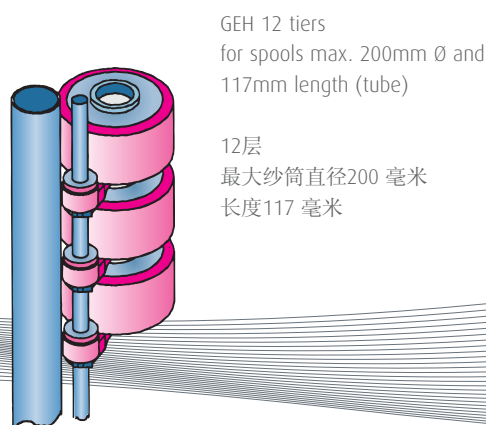
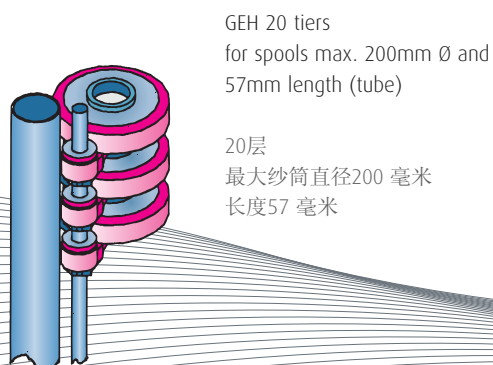
盘头直径检测器，张力测量装置，记录存储装置，预选装置。显示屏同时显示所有重要数据。

周长控制

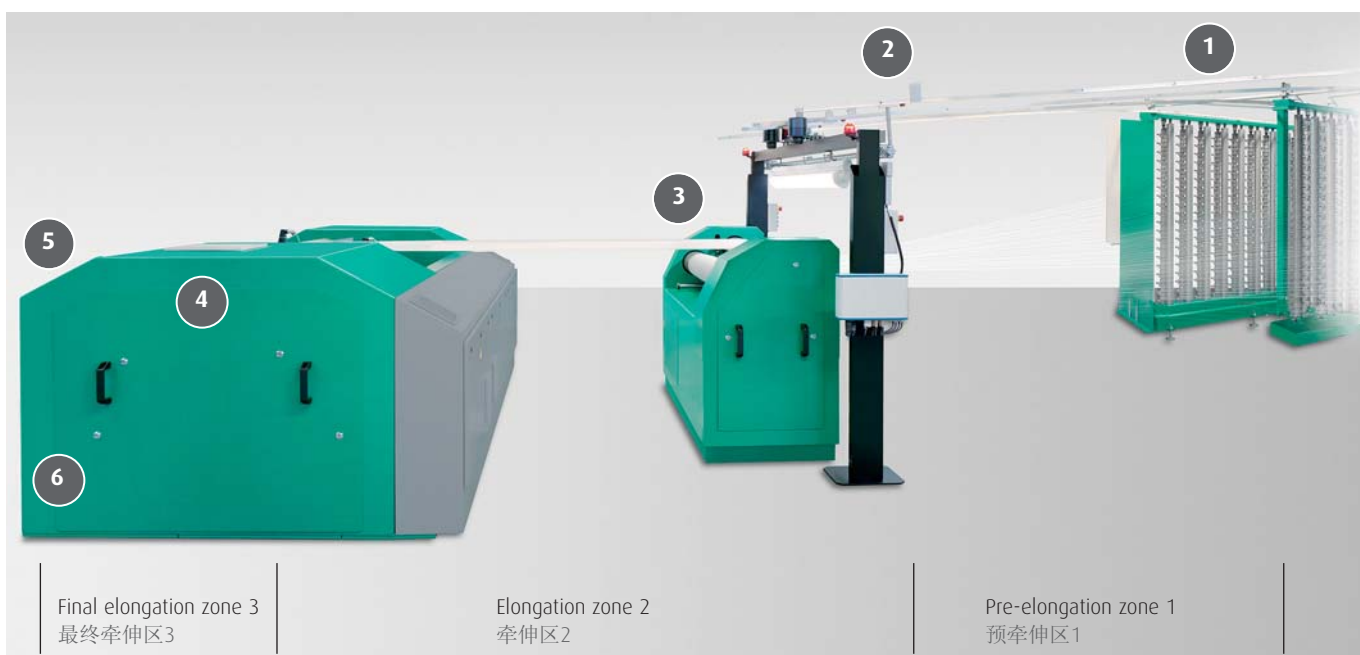
计算机控制均匀的盘头整经

3个牵伸区的纱路

- 1 - 纱架到预牵伸单元，预牵伸率 50-210 %
- 2 - 预牵伸单元到积极测速罗拉。
- 3 - 测速罗拉到盘头，最终牵伸率 15-100 %。



DSE-HH 21/30 DNC | DSE-HH 50/30 DNC *Elast-O-Matic*

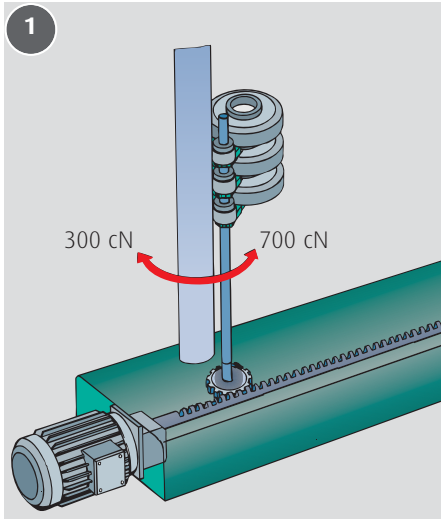


- 1 Creel sections
- 2 Thread retriever
- 3 Pre-elongation unit
- 4 DSE-HH *Elast-O-Matic*
- 5 Computer control
- 6 Overrun roller

- 1 纱架部分
- 2 断头复位器
- 3 预牵伸单元
- 4 DSE-HH *Elast-O-Matic*
- 5 计算机控制
- 6 测速罗拉

DSE-HH 21/30 DNC | DSE-HH 50/30 DNC *Elast-O-Matic*

For working highly delicate elastane yarn with computer controlled beam build-up
用于非常精细的弹性纱并由计算机控制盘头整经



1 Central contact pressure adjustment

By means of the central contact pressure adjustment it is possible to centrally adjust the contact pressure of all yarn packages in the creel within a range of 300–700 cN.



2 Yarn end break control

Detection via a camera system (Camscan) to eliminate all end breaks during the warping process.



3 Pre-elongation unit

Including anti-static device. To regulate the pre-elongation of the yarn between creel and pre-elongation unit so allowing a perfect draw-off from the package.

4 Monitor

- speed (m/min) – warping length (m) – actual windings (turns)
- actual beam circumference (mm) – stopping condition
- total stretch ratio (%) – proportional deviation of the actual beam circumference from rated value displayed on the master line
- proportional deviation of the yarn tension value from the nominal value-error diagnosis-printer

5 Braking device

Synchronized braking of the beam by means of air disk brake.

6 Thread retriever

The semi-automatic thread retriever is used to carry the broken ends from the corresponding package in the creel to the levelling roller unit.

1 接触压力中心调节装置

对纱架上所有纱筒的接触压力进行中心调节，调节范围300-700 cN。

2 断纱自停

通过摄像系统发现整经过程中的所有断纱。

3 预牵伸单元

包括静电消除装置。控制纱架到预牵伸单元的预牵伸，保证纱筒的完美退绕。

4 监视器

- 速度（米/分）- 整经长度（米）- 实际卷绕（圈数）
- 盘头实际周长（毫米）- 停机条件
- 总牵伸率（%）- 当前盘头周长与主盘头周长曲线相比较的周长比
- 从公称误差诊断打印机获得纱线张力偏差值

5 刹车装置

气动式同步刹车。

6 断头复位器

半自动断头复位器用来将纱线从纱架上对应的纱筒处带到平衡罗拉处。



Monitor
监视器



Braking device
刹车装置



Thread retriever
断头复位器

DSE-HH 21/30 DNC | DSE-HH 50/30 DNC *Elast-O-Matic*

Technical data

技术参数

System:

Direct drive of the section beam by means of AC motor.
Self-centering ball-type beam chucks 152 mm. Electropneumatic beam clamping, electromechanical beam loading and doffing device. Braking of the beam by means of pneumatic disk brake.

系统:

分段盘头由交流马达直接驱动。自动对中球型卡盘152毫米。气动夹紧装置；电子气动盘头升降装置。气动碟式刹车，保证盘头同步刹车。

Max. beaming speed	800 m/min
Max. draw-off speed	400 m/min
Max. final elongation	100 %
Max. pre-elongation	210 %
Max. total yarn tension	300 N
Section beams total length (DSE-HH 21/30 DNC)	21"
Section beams total length (DSE-HH 50/30 DNC)	21"+42"
Section beams flange diameter	21"-30"
Min. barrel diameter	200 mm

最大盘头速度	800 米/分
最大退绕速度	400 米/分
最大最终牵伸率	100 %
最大预牵伸率	210 %
最大纱线总张力	300 牛
分段经轴总长度 (DSE-HH 21/30 DNC)	21"
分段经轴总长度 (DSE-HH 50/30 DNC)	21"+42"
分段盘头盘面直径	21"-30"
最小内径	200 毫米

Creel layout GE-HH 20	
V-form	
1 to 4 creel rows possible	
Spools each section	180

纱架结构 GE-HH 20	
V型结构	
可供1到4排纱架	
每段纱筒	180

Creel layout GE-HH 12	
V-form	
1 to 4 creel rows possible	
Spools each section	108

纱架结构 GE-HH 12	
V型结构	
可供1到4排纱架	
每段纱筒	108

Rights for technical modifications reserved

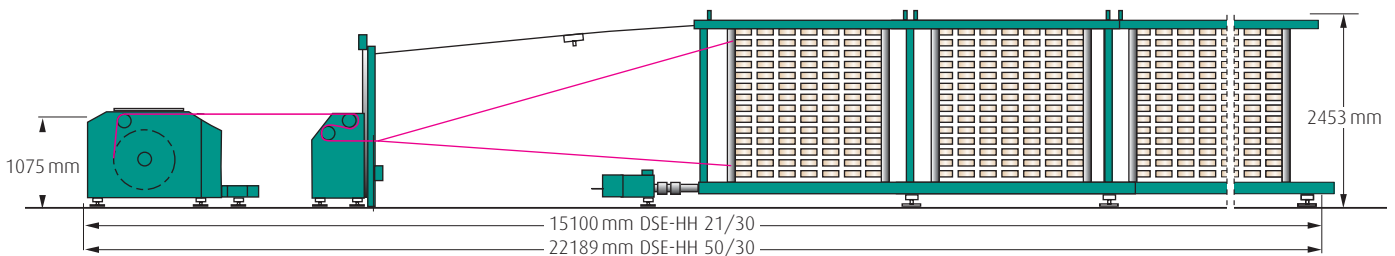
保留对产品技术更改的权利

Dimensions

DSE-HH 21/30 DNC *Elast-O-Matic*/GE-HH 20, 900 ends
DSE-HH 50/30 DNC *Elast-O-Matic*/GE-HH 20, 1800 ends

外形尺寸

DSE-HH 21/30 DNC *Elast-O-Matic*/GE-HH 20, 900 头份
DSE-HH 50/30 DNC *Elast-O-Matic*/GE-HH 20, 1800 头份



Rights for technical modifications reserved

保留对产品技术更改的权利



Vertical creel
垂直纱架

Germany

KARL MAYER Textilmaschinenfabrik GmbH
Brühlstraße 25
63179 Obertshausen
Phone +49 6104 4020
Fax +49 6104 402600
E-mail: info@karlmayer.de

KARL MAYER MALIMO
Textilmaschinenfabrik GmbH
Mauersbergerstraße 2, 09117 Chemnitz
PF 713, 09007 Chemnitz
Phone +49 371 81430
Fax +49 371 8143110
E-mail: info@karlmayer.de

Switzerland

KARL MAYER Textilmaschinen AG
Fabrikstrasse
CH-9240 Uzwil
Phone +41 71 9558400
Fax +41 71 9558487
E-mail: info@karlmayer.ch

Japan

NIPPON MAYER LTD.
No. 27-33 1-chome, Kamikitano
Fukui-City, 918-8522
Phone +81 776 545500
Fax +81 776 273400
E-mail: info@nipponmayer.co.jp

P. R. China

KARL MAYER (China) LTD.
518 # South Changwu Road
Wujin District, Changzhou City
Jiangsu Province, Zip code: 213166
Phone +86 519 86198888
Fax +86 519 86190000
E-mail: info@karlmayer.com.cn

KARL MAYER (H.K.) LTD.
3507, 35/F., Metroplaza Tower 2
223 Hing Fong Road, Kwai Chung
N.T., Hong Kong
Phone +8 52 27239262
Fax +8 52 27398730
E-mail: info@karlmayer.com.hk

Italy

KARL MAYER ROTAL S.r.L.
Via Trento N° 117
38017 Mezzolombardo (TN)
Phone +39 0461 608611
Fax +39 0461 601790
E-mail: info@karlmayerrotal.it

UK

KARL MAYER Textile Machinery LTD.
Kings Road, Shepshed
Leic. LE 12 9HT
Phone +44 1509 502056
Fax +44 1509 508065
E-mail: info@karlmayer.co.uk

USA

KARL MAYER North America
Mayer Textile Machine Corp.
310 North Chimney Rock Road
Greensboro, North Carolina 27409
Phone +1336 294 1572
Fax +1336 8540251
E-mail: info@karlmayerusa.com

www.karlmayer.de



we care about your future



KARL MAYER